

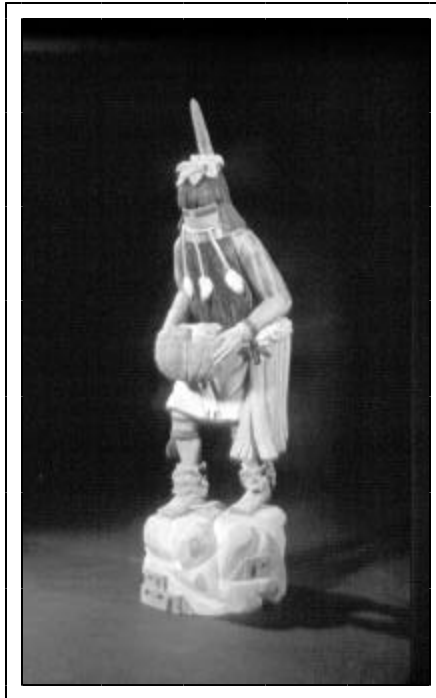
GLYPHS

The Monthly Newsletter of the
Arizona Archaeological and Historical Society
An Affiliate of the Arizona State Museum, University of Arizona
Founded in 1916



Highlights of this Issue

President's Message.....	2
The Cornerstone – ASM/AAHS 2002 Library Talks.....	4
AAHS Prehistoric Southwest Pottery Identification Class.....	5
<i>Hopis as Artists</i> by Helga Teiwes.....	6-7



Longhair Katsina – Anga Katsina (Hopi)

Carved by Ron Honyouti

Photograph by Helga Teiwes

Next AAHS Meeting: 7:30 p.m., March 18, 2002
Duval Auditorium, University Medical Center

PRESIDENT'S MESSAGE

February was a busy month! First there was the Super Bowl followed by the Pro Bowl. Then, the Olympics began. WOW, what an opening ceremony!! The athletic competition and Utah scenery were head-to-head for sheer enjoyment. And the NBA threw in its All Star game! Of course, PAC 10 sports are always a big draw around these parts. But not all excitement was limited to the sports scene. AAHS's SW Textiles class taught by Laurie Webster showcased fantastic artifacts from the ASM Collection, thanks to the Museum and its Curatorial Staff for their assistance.

Jeff Altschul from Statistical Research, Inc., provided some real food for thought with his presentation about the Papagueria and the Patayan at the AAHS monthly lecture. The ASM sponsored Benefit Trunk Show and Lecture with Jim Babbitt was really great. It made everyone there want to throw away the overcoats and start wearing blankets.

SWIAF (Southwest Indian Art Fair) was the crowning achievement of the month. This time, and for the first time, a Silent Auction was held in conjunction with SWIAF. A fabulous weekend of SW American Indian art and culture! Tubac Presidio State Park continued its year-long celebration of its 250th birthday.

Now, if you think February's been busy, take a look at what's ahead for March —

Archaeology Awareness Month in Arizona. Starting with Archaeology Expo in Coolidge, AZ, (coincides with the 2002 Coolidge Cotton Days) AAHS and ASM have collaborated with each other and the Tucson-Pima Public Libraries to present a series of eight lectures on various facets of SW Archaeology.

AAHS also will conduct a field trip to the Papagueria, lead by Jeff Altschul, as a follow-up on his talk last month.

The schedule's so crowded that ASM has had to move its Annual Open House to the first Saturday, April 6th. Their Spring Book Sale will happen then, too.

And for those with a yen to get out of town and enjoy colder climes, there's the Society of American Archaeology Convention in Denver, CO. Just writing all this down makes me feel like I'm doing a treadmill test.

Archaeology Expo, incidentally, is funded by Heritage Fund monies. Check their web site for more information: www.arizonaheritagealliance.org. They need your support. While you're at it, have a look at the Vanishing Treasures home page at <http://www.cr.nps.gov/aad/vt/vt.htm>. Link to it from the Archaeology and Ethnography home page at <http://www.cr.nps.gov/aad> and click on "Con-serve and Manage." They, too, need your support.

I look forward to seeing you multiple times and places this month. Don't forget, there's always a need for volunteers. Contact myself or Jada St. John at the Arizona State Museum to get on the list.

AAHS APRIL GENERAL MEETING NOTICE!

Scheduling conflicts with UMC programs have forced a change in the meeting date for April. AAHS's regular monthly meeting/lecture will be on Monday, April 22, 2002 (4th Monday in April.) All other meeting dates will remain on the third Monday of the month (except August, when there is no meeting because of the Pecos Conference.)

NEWS FROM THE EDUCATION COMMITTEE ABOUT AN UPCOMING CLASS

In response to popular demand, AAHS will offer a hands-on course on prehistoric Southwestern pottery identification in the Spring of 2002. This course will provide basic knowledge on how ceramic analysts classify and date ceramic sherds and vessels. Each of the different decorated wares commonly found in Arizona will be discussed in detail.

This multi-instructor class will be held on Tuesday evenings, April 9, 16, 23, and 30, from 7 to 9 p.m. Class size will be limited to 20 people.

We are still putting together the final details, but if you wish to register early, please call Laurie Webster at 520/325-5435. A formal course announcement will appear in next month's *Glyphs*.

THE ARCHAEOLOGY EXPO at COOLIDGE

AAHS needs your help at the 2002 Archaeology Expo. This coming year's event will be on March 2 and 3, Saturday and Sunday, in the city of Coolidge/Casa Grande Ruins National Monument, in conjunction with Cotton Days Festival; and, as usual, the Society will have an information booth.

If you are planning on attending this Expo, give us an hour or two of your time and help us tell everyone what a great organization we have. It is an ideal opportunity to visit the other organizations and institutions there, to find out what they are working on, and to visit the other attractions in the Coolidge area.

Please give Don Kucera a call at 520/792-0554 and tell him that you would like to be part of this fantastic exposition.

GLYPHS DEADLINE DATE!

The deadline for the receipt of information and articles to be included in *Glyphs* is the 15th of each month for the next month's issue. New material is urged, needed, and always appreciated. Write to me at AAHS, ASM, University of Arizona, Tucson, Arizona 85737; phone: 262/338-6938; e-mail: LTAGlyphs@aol.com.

AAHS's WEB SITES

Glyphs can be found at The Arizona Archaeological and Historical Society website in PDF format on the Internet at <<http://www.statemuseum.arizona.edu/about/index.html>>. Look for the special *Glyphs* section. You can also find *Glyphs* on the SWA website at: <<http://www.swanet.org/zarchives/aahs/>>.

THE CORNERSTONE**ARCHAEOLOGY AWARENESS MONTH LECTURE SERIES**

This lecture series is co-presented by ASM and the Arizona Archaeological and Historical Society. All lectures are at Tucson-area public libraries. All are free and open to the public.

- March 4:** J. Jefferson Reid, *History of Archaeology in the American Southwest: The Last 25 Years*, Main Library, 101 N. Stone Ave. 7-9 p.m.
- *March 6:** Paul and Suzanne Fish, *Fortified Hill Sites in Southern Arizona and Northern Mexico*, Himmel Park Branch, 1035 N. Treat Ave. 6:30-8:30 p.m.
- March 12:** Jeff Clark, *Recent Archaeological Investigations in the San Pedro*, River Valley Golf Links Branch, 9640 E. Golf Links Rd. 7-9 p.m.
- March 13:** John Ware, *Matrilineal Puzzles and Western Pueblo Origins: New Evidence from the American Southwest*, Main Library, 101 N. Stone Ave. 7-9 p.m.
- March 19:** R. Gwinn Vivian, *Chaco Canyon and the Chacoan Road System*, Valencia Branch, 202 W. Valencia Rd. 7-9 p.m.
- *March 20:** Tom Sheridan, *The Border in an Historical Perspective*, River Center Branch, 5605 E. River Rd. 7-9 p.m.
- March 26:** Bill Doelle, *Archaeology of the Western Papageria*, Bear Canyon Branch, 8959 E. Tanque Verde Rd. 7-9 p.m.
- *March 27:** Rich Lange, *Echoes in the Canyons: Cliff Dwellings of Central Arizona*, Wilmot Branch, 530 N. Wilmot Rd. 7-9 p.m.

*Also presented as part of the Tucson-Pima Public Library's *Sonoran Desert Sampler*.

For more information, contact:
Darlene F. Lizarraga, marketing coordinator
Office of Museum Advancement, Arizona State Museum
PO Box 210026, Tucson, AZ 85721-0026
520-626-8381/621-2976; fax /489-9138 pager
<http://www.statemuseum.arizona.edu>

PREHISTORIC SOUTHWESTERN POTTERY IDENTIFICATION

**Presented by the Arizona Archaeological and Historical Society
Tuesday evenings, 7-9 p.m., April 9-30, 2002**

This four-session course provides an introduction to the prehistoric pottery types of Arizona and methods of ceramic analysis and identification. Through hands-on study, students will learn how to classify and date prehistoric ceramic vessels and sherds commonly found in the state. Classes will meet at the Arizona State Museum and in the Department of Anthropology at the University of Arizona Campus.

April 9: Introduction to Ceramic Analysis
(Dr. Patrick Lyons, Center for Desert Archaeology)



April 16: Hohokam Buff Wares and Tucson Basin Red-on-brown Wares
(Alexa Smith, Independent Ceramic Consultant)

April 23: White Mountain and Cibola Wares
(Dr. Barbara Mills, UA Department of Anthropology)

April 30: Salado and Hopi Wares
(Dr. Patrick Lyons, Center for Desert Archaeology)

Due to the hands-on format of the class, registration is limited to 20 students.
Cost is \$30 for AAHS members and \$40 for non-members;
\$10 discount available for students and K-12 teachers. Preregistration is required.
To register, please call Laurie Webster at (520) 325-5435.



AAHS HAPPENINGS



TOPIC OF THE MARCH 18 GENERAL MEETING:



Hopis as Artists

by Helga Teiwes

Art comes naturally to any Hopi child; they seem to be born with the gift of creating designs in natural or abstract form. Symbolism is easily absorbed into these designs. As archaeological evidence shows, abstract forms of birds and plants have been used on prehistoric pottery already centuries ago.

During the last 100 years, these design forms have been transferred to basketry decoration and in Hopi silversmithing to silver-overlay, an artform innovated and created by Hopi silversmiths and artists.

Woodcarving of Katsina dolls is another traditional artform done by Hopi men that, within the last decade, has been elevated by several carvers of exceptional talent (including some women) to a collector's art.

The ability of almost every Hopi man and woman creating an utilitarian item into a piece of art is extraordinary. However, traditionally restricted by the form and the function of the vessel or basket, the artist's expression is still founded in age-old tradition with limited exuberance of innovated creation. Most Hopi artists keep the scales of tradition and free artistic expression finely balanced.

It was my privilege to work with Hopi Katsina doll carvers, potters and basket weavers for several years in providing the Arizona State Museum with a photographic documentation of contem-

porary Hopi artists working in these media. This slide show will give you an insight into the art world of Hopi artists.

Speaker Helga Teiwes was born (a long time ago) on the Lower Rhine in Germany. Most of her school years were spent during and after WW II, ending with the Abitur 1950 in Düsseldorf. In 1960, she immigrated to the United States and worked for four years as a photographer in New York City.

Helga left Manhattan in June 1964 to discover the "rest" of the USA, ending her westward exploration briefly in Denver. Her meeting with Emil W. Haury on July 6, 1964 was probably one of the most important events for her future. Doc Haury hired her as the staff photographer for the excavation at Snaketown, and thereafter encouraged her to join the employ at the University of Arizona.

In 1966, Helga was hired by Dr. Raymond Thompson as the full-time photographer for the Arizona State Museum, a position she held until her retirement in 1993.

During those 29 years at the ASM, she worked on most Indian reservations in Arizona, documenting daily life and artistic endeavors of southwest Native Americans, besides recording archaeological excavations, artifacts and museum exhibits.

Ms. Teiwes is an author of two books: [Kachina Dolls: The Art of Hopi Carvers](#)

and Hopi Basket Weaving: Artistry in Natural Fibers. Her photographs are also found in the book Navajo by Wolfgang Lindig.

Helga Teiwes is also holder of the

Emil W. Haury award from the Southwest Parks and Monuments Association and the Victor R. Stoner award from the Arizona Archaeological and Historical Society.



AAHS Meeting Time and Place

The Arizona Archaeological and Historical Society's monthly meeting will be held on March 18, 2002, at 7:30 p.m. at Duval Auditorium, University Medical Center, 1501 North Campbell Avenue (north of Speedway). Duval Auditorium can be reached by proceeding either north or south on North Campbell and turning west into the UMC between the two traffic lights — one is at Speedway and one is at Elm. Free parking is available south of Mabel Street, across from the College of Nursing. The Front Entrance is on the top level of the parking structure. Duval Auditorium is on the 2nd level of the Hospital. Upon entering the Front Entrance, turn right and then follow the signs to Duval Auditorium.

AAHS's FIELD TRIP TO THE PATAYAN SITES IN THE WESTERN DESERT MARCH 9, 2002

The Society will be taking AAHS members and guests to visit Patayan sites in the western desert in the Gila Bend area on Saturday, March 9th. This would have been the February field trip, but because of the Indian Art Fair at the Arizona State Museum on the 23rd and 24th, and the Archaeological Expo in Coolidge the 2nd and 3rd of March, it was rescheduled. Dr. Altschul will take us on the Barry M. Goldwater Air Force Range located in Maricopa, Pima and Yuma Counties. Statistical Research, Inc., is presently conducting an archaeological survey of the area.

However, because the area is controlled by the military, we need permission to travel on the range. As of the printing of this issue of *Glyphs*, it is uncertain that we can enter the range, as it

depends on Air Force scheduling. If we cannot, there are many other sites we can visit in the Gila Bend area. Also, due to the lack of rain, there is some question as to the wildflower bloom this year, if any; normally, this is the best time of the year for wildflowers in this part of Arizona. So keep your fingers crossed!

The distance from Tucson to Gila Bend is 124 miles, a two-hour trip. We will leave Tucson at 7 a.m. to arrive at Gila Bend at 9 a.m. The trip fee will be \$5 for members and \$10 for non-members.

For information and the meeting place, contact Don Kucera in Tucson at 520/792-0554. This trip is limited to 30 people, so don't hesitate and make your reservations fast!

**ANCIENT HUMAN IMPRINTS:
EXPLORING THE LANDSCAPE ARCHAEOLOGY IMAGES
OF ADRIEL HEISEY**

Adriel Heisey turns standard archaeology on its head. Typical diggers pierce the ground with excavations in pursuit of the past. Heisey, however, soars above the earth to capture the imprints cultures – ancient and modern – have left on the landscape.

Adriel Heisey is a Tucson-based aerial photographer. After years of flying all over the United States as a professional pilot, he now devotes himself to artistic interpretation of natural and cultural landscapes through aerial photography. Heisey's work is published in magazines such as *National Geographic*, *Geo*, *Smithsonian*, *Natural History*, and *Arizona Highways*.

Join Adriel and staff from the Center for Desert Archaeology for a multimedia program of Adriel's remarkable Sonoran Desert images, followed by a special presentation focusing upon landscape archaeology images from the Lower San Pedro River Valley and beyond.

We want your input and reactions as we begin planning a major exhibit of Adriel's archaeology images. **Please come to one of the three free sessions scheduled in March as part of Arizona's Archaeology Awareness Month:**

March 6, 7:00 – 8:30 p.m.

Central Arizona College, Aravaipa Campus
Aravaipa Road, Mammoth

March 13, 7:00 – 8:30 p.m.

Cascabel Community Center
Cascabel Road, Cascabel

March 27, 7:00 – 8:30 p.m.

Benson Public Library
300 S. Huachuca St., Benson

For more information, contact Linda Pierce, Programs Manager,
Center for Desert Archaeology at 520/882-6946 or lpierce@cdarc.org

CENTER FOR DESERT ARCHAEOLOGY
300 E. University, Ste. 230, Tucson AZ 85705
Telephone 520/882-6946 Fax 520/882-6948
center@cdarc.org www.cdarc.org

LIFE AND DEATH ALONG TONTO CREEK

Excavations at 27 archaeological sites along State Route 188 in the Tonto Basin of east-Central Arizona by Desert Archaeology, Inc. from 1992-1996 uncovered 315 burials and a remarkable assemblage of mortuary offerings. The burials were primarily extended inhumations that date to the 13th century AD or early Classic period. Also included were 21 cremations and 13 inhumations that date to earlier periods. Descriptions of this burial population and analyses of many of the offerings are now available in the latest Center for Desert Archaeology Publication, *Tonto Creek Archaeological Project: Life and Death along Tonto Creek* (Anthropological Papers No. 24), edited by Jeffery J. Clark and Penny Dufoe Min-turn.

Each burial is described in detail with basic information on location, treatment of the deceased, osteology, dentition, grave architecture, and associated offerings listed. Many descriptions are accompanied by illustrations. Detailed inventories of offerings by artifact type at both the burial and settlement level are also provided. In addition to the descriptive

data, osteological and dental analyses of the burial population and the analytical results of many of the artifact classes are presented, including shell, stone, and ceramic jewelry, bone and wooden artifacts, and three painted, clay-lined baskets.

Ceramic vessels, and flaked and ground stone tools recovered from burials are also inventoried in this volume. Results of extensive analyses conducted on the more than 1100 whole vessels from mortuary contexts can be found in *Tonto Creek Archaeological Project, Artifact and Environmental Analysis: A Tonto Basin Perspective on Ceramic Economy* (Anthropological Papers No. 23, Volume 1), edited by James M. Vint and James M. Heidke. The flaked stone tools (primarily projectile points) and few ground stone tools recovered from mortuary contexts are considered with those recovered from domestic contexts in Anthropological Papers No. 23, Volume 2, to be published this year. These volumes can be purchased directly from the Center for Desert Archaeology (www.cdarc.org, 520-882-6946).

OLD PUEBLO ARCHAEOLOGY CENTER

1000 E. Fort Lowell Road, Tucson
Correspondence address: PO Box 40577, Tucson AZ 85717-0577
520/798-1201 — adart@oldpueblo.org

MARCH IS ARIZONA ARCHAEOLOGY AWARENESS MONTH

For information on this annual, statewide celebration and the many special activities that will be offered by numerous organizations throughout Arizona, contact Ann Howard at the Arizona State Historic Preservation Office, Phoenix: 602-542-7138 or ahoward@pr.state.az.us.

For information on the following Old Pueblo Archaeological Center programs, contact: Allen Dart: 798-1201 weekdays; 327-3509 evenings; 603-6181 cellular; email: (above)

ARCHAEOLOGICAL TOURS AND DIG AT YUMA WASH SITE

Dates: March 1, 2, 14, 15, 16, 21, 22, 23; Time: Tours (no digging) 9-1; hands-on dig 8-2:30
Place: Yuma Wash archaeological site in Marana District Park
Sponsored by: Old Pueblo Archaeology Center and Town of Marana
Price: Tours free; hands-on dig program \$38 per person

HOPI SCHOLAR DISCUSSES ARCHAEOLOGICAL INTERPRETATION

Date: Saturday, March 9; Time: 7 p.m.
Place: University Medical Center's Duval Auditorium, 1501 N. Campbell Ave., Tucson
Sponsored by: Old Pueblo Archaeology Center
Price: Free; Open to Public

NATIVE SCHOLAR DISCUSSES ARCHAEOLOGY/TOHONO O'ODHAM HISTORY

Date: Friday, March 15; Time: 7 p.m.
Place: City of Tucson's Sentinel Building, 320 N. Commerce Park Loop, Tucson
Sponsored by: Old Pueblo Archaeology Center and Arizona Humanities Council
Price: Free; Open to Public

ARCHAEOLOGIST DISCUSSES RECENT EXCAVATIONS /SANTA CRUZ RIVER

Date: Saturday, March 16; Time: 7 p.m.
Place: Coyote Trail Elementary School auditorium, 8000 N. Silverbell Rd.
Sponsored by: Old Pueblo Archaeology Center and the Town of Marana
Price: Free; Open to Public

ARROWHEAD-MAKING/FLINTKNAPPING DEMONSTRATION AND WORKSHOP

Date: Sunday, March 17; Time: 9 a.m. to noon
Place: Old Pueblo Archaeology Center, 1000 E. Fort Lowell Road
Sponsored by: Old Pueblo Archaeology Center
Price: \$25 per person (20% discount for Old Pueblo members)

TRADITIONAL POTTERY MAKING LEVEL 1 WORKSHOP

Date: March 17 through May 5 (no class on Easter, March 31); Time: 1-4 p.m.
Place: Old Pueblo Archaeology Center, 1000 E. Fort Lowell Road
Sponsored by: Old Pueblo Archaeology Center
Price: \$69 per person (20% discount for Old Pueblo members)

AAHS MEMBERSHIP/SUBSCRIPTION APPLICATION

CATEGORIES OF MEMBERSHIP – All members receive discounts on Society field trips and classes. Monthly meetings are free and open to the public.

\$30 *Glyphs* membership receives the Society's monthly newsletter, *Glyphs*
\$30 Student *Kiva* membership receives both *Glyphs* and *Kiva*; \$15 receives *Glyphs*
\$40 *Kiva* membership receives all current benefits, including four issues of *Kiva*, 12 issues of *Glyphs*
\$50 Institutional membership (primarily libraries) receives *Kiva* and *Glyphs*
\$75 Contributing, \$100 Supporting, \$250 Sponsoring, and \$1,000 Lifetime memberships all receive
Glyphs and *Kiva*, and all current benefits.
Outside U.S. add \$10.00

Enclosed is U.S. \$ _____ for one _____
[Enter membership/subscription category]

Name * _____ Phone ____/_____
* [Please enter preferred title: Miss, Mrs., Ms., Mr., Mr. & Mrs., Mr. & Ms., etc.]

Address _____

Membership/Subscription Information

Tucson AZ 85721 USA
2001-2002

Visitors are welcome at all of the Society's regular monthly meetings but are encouraged to become members in order to receive the Society's publications and participate in its activities at discount rates.

Memberships and subscriptions run for one year beginning July 1 and ending June 30. Membership provides one volume (four numbered issues) of *Kiva*, the Journal of Southwestern Anthropology and History; 12 issues of the monthly newsletter *Glyphs*; member rates for Society field trips and other activities.

For a brochure with more information and a membership/subscription application form, write to:

Keith Knoblock
Vice President for Membership
Arizona Archaeological and Historical Society
Arizona State Museum, University of Arizona

Members of the Board of Directors
Officers

President: Bill Hallett 520/722-9298
<billhalay@aol.com>

Vice President for Activities: Don Kucera
(520/792-0554)

Vice President for Membership:
Keith Knoblock

Recording Secretary: Sarah Herr (520/881-2244)

Corresponding Secretary: Georgiana Boyer

Treasurer: Bob Conforti
<boxcanyon@worldnet.att.net>

Assistant Treasurer: Laural Myers
<lauralmyer@juno.com>

Student Representative: Anna Neuzil
<aneuzil@email.arizona.edu>

Board Members

Don Burgess; (520/299-4099), <dbkuat@aol.com>; Jeff Clark <jclark@desert.com>, Jane Delaney (t20/296-1361); Rich Lange 520/621-6275, <langer@email.arizona.edu>; Lex Lindsay; Ron Schuette 520/790-1947; and Jennifer Strand 520/404-6097, <rascalct@mindspring.com>.

Editors of Society Publications



Arizona Archaeological and Historical Society
Arizona State Museum
University of Arizona
Tucson, Arizona 85721 USA

NONPROFIT
ORGANIZATION

U.S. Postage
PAID

Tucson, Arizona

Return Service Requested

The objectives of the Arizona Archaeological and Historical Society are to encourage scholarly pursuits in areas of history and anthropology of the southwestern United States and northern Mexico; to encourage the preservation of archaeological and historical sites; to encourage the scientific and legal gathering of cultural information and materials; to publish the results of archaeological, historical, and ethnographic investigations; to aid in the functions and programs of the Arizona State Museum, University of Arizona; and to provide educational opportunities through lectures, field trips, and other activities.

See inside back cover for information about the Society's programs and membership and subscription requirements.